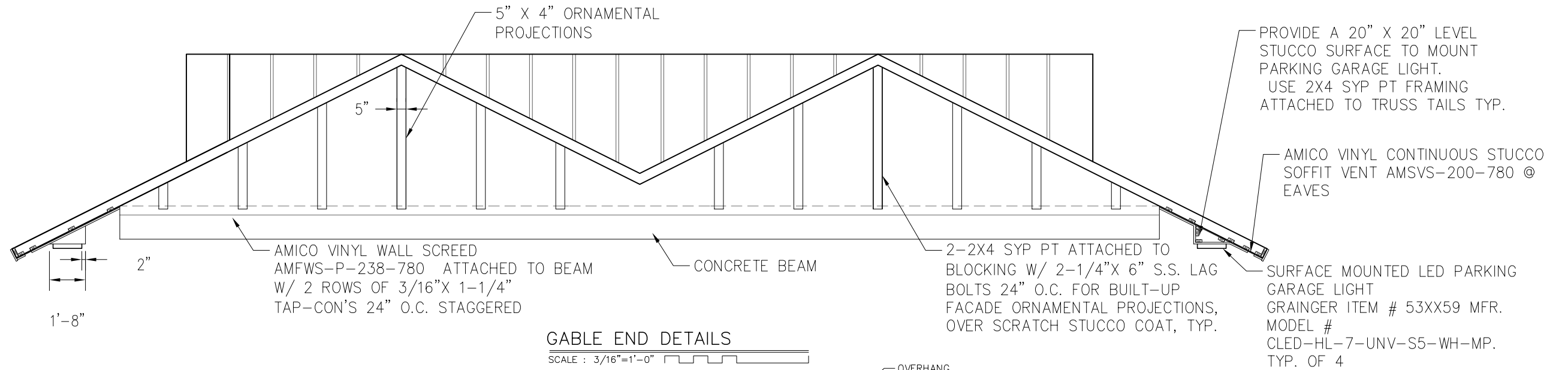
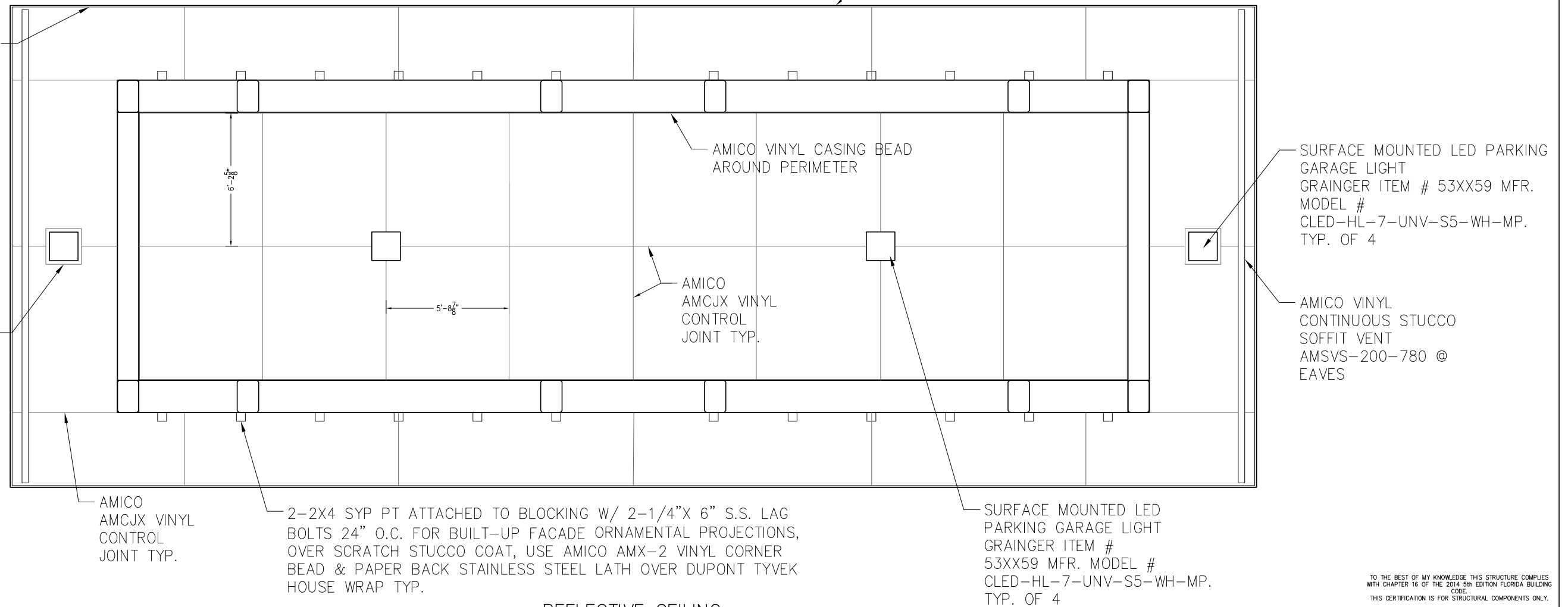


NOTE:
ALL ELECTRICAL SIGNALER
DEVICES TO REMAIN IN
OPERATION DURING
CONSTRUCTION.



AMICO AM66-EZ-780 E-Z VINYL CASING BEAD & STAINLESS STEEL LATH OVER FULLY BLOCKED 1/2" CDX 4 PLY PLYWOOD DIAPHRAGM SOFFIT W/ 3-COAT STUCCO PER ASTM C-926, NOTE: VINYL CONTROL JOINT AMCJX-780 EVERY 10' ACROSS SOFFIT OR AT MID SPAN, WHICH EVER IS LESS. TYP.

PROVIDE A 20" X 20" LEVEL STUCCO SURFACE TO MOUNT PARKING GARAGE LIGHT. USE 2X4 SYP PT FRAMING ATTACHED TO TRUSS TAILS TYP.



TO THE BEST OF MY KNOWLEDGE THIS STRUCTURE COMPLIES WITH CHAPTER 16 OF THE 2014 5th EDITION FLORIDA BUILDING CODE. THIS CERTIFICATION IS FOR STRUCTURAL COMPONENTS ONLY.

PROFESSIONAL ENGINEER OF RECORD
JONATHAN H. COLE P.E. #36384
STATE OF FLORIDA

DATE	REVISION	BY

GWE GIFFELS-WEBSTER ENGINEERS, INC.
CERTIFICATE OF AUTHORIZATION #3607

900 Pine Street, Suite 225
Englewood, Florida 34223
Phone (941)475-7981
Fax (941)474-4285

DATE: 5/2/17
DRAWN: TS
CHK'D BY: JC

GASPARILLA ISLAND BRIDGE AUTHORITY
6201 BOCA GRANDE CAUSEWAY
PLACIDA, FL. 33946

STUCCO DETAILS &
REFLECTIVE CEILING

GIBA TOLL BLDG.
SHEET: 7 OF 8
GWE NO. 6339.00